

Photoglob Co. Zurich

Branch-establishments:

Switzerland.

Photochrom Co.

LONDON E. C., 121 Cheapside.

Photochrom Co.

DETROIT U. S. A., P. O. Box 603.



A photochrom
is a
photograph in the colours
of Nature.

Awarded by first distinctions
at
general and art exhibitions.



Sold at Book-stores
Art- and Photographic shops
in all the countries.

The collection is steadily increasing
in new subjects.

MANUEL-CATALOGUE

of

PHOTOCHROMS

Colour Photography

— Supplement of the General-Catalogue —

Vol. 4.

United Kingdom,

Denmark, Sweden and Norway.



British Journal of Photography.—"We can testify not only to their remarkable fidelity to the colours of the originals, but also to their high artistic qualities. Such pleasing pictures should speedily achieve a great popular vogue."

The Englishman, Calcutta.—"There is a richness of colour tempered by a delicacy of tone and a clearness and accuracy of detail which at once constitutes the photographs perfect miniatures."

SOLD:

Photochroms are bought in all countries throughout the world

as mementos of excursions or journeys, and for presents of all kinds, for amateur-collections and scientific purposes by school-boards and architects, for artistic models, for decorating Hotel-corridors, for advertising-boards, for illustrating works on art, literature &c.

* **T**he Bulletin of the Photoglob Co. is issued monthly
* in the French and German languages
* and sent post-free to Switzerland at Fr. 1. 50 } per annum.
* to all other parts of the world " " 2. — }
* Advertisements find a large circulation by this publication.
* *****

These views are stocked in the following styles:

- a = unmounted.
- b = mounted on photographic, gilt-edged card-board.
- PS = plate sunk mount.
- d = cut-boards (cut-out mount).

~~~~~

Pictures, for which the kind of mount is not specified in the order-list, will be sent unmounted. Photochrom-Albums, Covers and Portfolios, Glass- and Enamel-mounts suitable for drawing- and waiting-room tables. **Pictures in gilt sand frames especially adapted for drawing-room decoration.**

~~~~~

The measurement of views published is as follows:

Size	I unmounted	4 ³ / ₄ by	6 ¹ / ₂ inch.		
"	II "	6 ³ / ₈ "	8 ³ / ₄ "		
"	III "	8 ¹ / ₂ "	10 ¹ / ₂ "		
"	IV "	11 "	14 ¹ / ₂ "		
"	V "	13 ³ / ₄ "	18 "		
"	VI "	16 ¹ / ₂ "	20 ¹ / ₂ "		
"	VII "	19 ³ / ₄ "	25 ¹ / ₂ "		

Panoramas	<u>small size</u>	<u>middle size</u>	<u>large size</u>
	about inch. 7 by 16 ¹ / ₂	6 ³ / ₄ by 25	9 ³ / ₈ by 25

Extra size	<u>Forum Romanum</u>	<u>Gorner Grat</u>	<u>Montblanc</u>	<u>Wengernalp</u>
	about inch. 17 by 36	19 by 35	19 by 36	17 by 34

Reproductions of art pictures in sundry sizes.

GG 2009

UNITED KINGDOM.

a) ENGLAND.

Size I.

Unmounted $4\frac{3}{4}$ by $6\frac{1}{2}$ inches.

- 204 = **London and Suburbs.** Hampton Court Palace, seen from the Park.
- 205 || » Penshurst Park, Kent.
- 206 || » Oak Tree in Richmond Park.
- 701 = **Isle of Wight.** Sandown Bay.
- 702 || **North Devon.** Clovelly from Hobby Drive.
- 703 || » Clovelly High Street.
- 704 = » » Harbour.
- 705 = » » Outside Clovelly Harbour'.
- 706 = » Lee. Old Post Office.
- 707 = » Lee. Swiss Cottage
- 708 = » Ilfracombe from Hillsboro.
- 709 = » » Beach.
- 710 = » » Lantern Hill.
- 711 = » » Tor's Walk.
- 712 = » Lynmouth Harbour.
- 713 = » » »
- 714 = » » »
- 715 = » Lynton and Lynmouth.
- 716 = » » » Glen Lyn Falls and Rustic Bridge.
- 717 || » » » East Lyn.
- 718 = » » » Watersmeet.
- 719 = » » » Valley of Rocks.
- 720 = » » » Castle Rock.

Size II.

Unmounted $6\frac{3}{8}$ by $8\frac{3}{4}$ inches.

Bangor, see Wales.

- 10113 = **Bath.** Roman Baths and Abbey.
- 10114 = » Abbey from the Bridge.

Size II, Continued.

- 10115 = **Bath.** Prior Park College with Palladian Bridge.
 10283 = » Abbey.
 10904 = **Battle.** High Street.
 10905 = » Abbey Gateway.
 10906 = » Church.
 10742 = **Bedford** Bridge and Promenade.
 10743 = » Promenade.
 10744 = » A "Peep" from the Recreation Grounds.
 10745 || » Bunyan's Statue.
 10746 = » Howard Statue.
 10530 = **Berry Pomeroy** Castle.
 10205 = **Blackpool.** Promenade and Tower from North Pier.
 10206 = » Promenade and Tower from South Pier.
 10207 = » The North Pier.
 10208 = » The Beach with North Pier.
 10209 || » The Tower with Beach.
 10210 || » The Tower.
 10295 = **Bournemouth** from the Sea.
 10301 = » Branksome Chine.
 10340 = » Invalids' Walk.
 10341 || » The Gardens. I.
 10342 = » » II.
 10323 = » » III.
 10327 = » Entrance to the Harbour.
 10401 = » from East Cliff.
 10345 = » » West Cliff.
 10289 = **Brighton.** The Pier from the East.
 10290 = » from the Pier I.
 10291 = » » » II.
 10332 = » Aquarium.
 10108 = **Bristol.** River Avon from Clifton Downs.
 10109 = » Clifton Suspension Bridge from the Ferry.
 10110 = » » » » Cliffs II.
 10902 = » » » » from North III.
 10903 = » » » » North-East IV.
 10111 = » Cathedral and Romain Gateway.
 10899 = » St. Augustine's Bridge.
 10900 = » College Green
 10901 = » St. Mary Redcliff.
 10718 = **Brixham.**
 10503 = » Trawlers.
 10260 = **Broadstairs** from the Cliffs.
 10261 = » from the Gardens.
 10262 || » York Gate.

Size II, Continued.

- Bridlington**, see **Yorkshire**.
Brougham Castle, see **Lakes**.
Buxton see **Derbyshire**.
10878 = **Camberley**. Waverley Court.
10885 = » Royal Staff College.
10886 = » Royal Staff College. Dry Hounds.
10887 = » Avenue, Heathside.
10888 = » Chobham Ridges.
10889 || » The Drive, Braken Dale.
10890 = » View from Braken Dale.
10891 = » Bagshot and Frimley Road.
10892 = » View at Frimley, I.
10893 = » » » » II.
10038 = **Cambridge**. Queen's College Bridge.
10039 = » St. John's Bridge from the Grounds.
10064 = » Corpus Christi College.
10074 || » Trinity College Gateway.
10075 || » St. John's College Chapel from the River.
10076 || » St. John's Gateway.
10077 || » Bridge of Sighs.
10082 = » Clare College and Bridge.
10091 = » Cajus College and Senate House.
10092 = » Fitzwilliam Museum.
10093 = » King's College.
10094 = » Trinity College.
10131 = » Jesus College.
10132 = » Queen's College Cloisters with Erasmus Tower.
10133 = » St. John's College.
10134 = » Girton College.
10222 = **Canterbury**. Cathedral.
10223 = » Westgate.
10224 = » Norman Staircase.
10225 = » St. Martin's Church.
10226 = » Archway.
10907 = » Cathedral. Choir looking East.
Carnarvon, see **Wales**.
Carmarthen, see **Wales**.
10411 = **Channel Islands**. Jersey. Elizabeth Castle, St. Heliers.
10412 = » Jersey. Rozel Bay.
10413 = » » The Devil's Hole.
10414 = » » Bonne Nuit Bay.
10415 || » » Plemont Caves and Needle Rock.
10416 = » » Noirmont Point.
10417 = » » Saint Brelades Bay.

Size II, Continued.

10418 =	Channel Islands.	Jersey.	Saint Aubins.	
10419 =	»	Jersey.	Valley de Vaux.	
10420 =	»	»	Arrival of Boats, St. Heliers.	
10437 =	»	»	Bouley Bay.	
10438 =	»	»	Coast at the Devil's Hole.	
10439 =	»	»	Greve de Lecq.	
10440 =	»	»	Plemont. I.	
10441 =	»	»	» II.	
10442 =	»	»	Portelet Bay. I.	
10443 =	»	»	» » II.	
10444 =	»	»	St. Brelades Bay.	
10445 =	»	»	St. Aubins.	
10446 =	»	»	Vinchelez Lane.	
10447 =	»	»	Mont Orgueil Castle.	
10448 =	»	»	Gorey.	
10449 =	»	»	Corbiere Lighthouse. I.	
10473 =	»	»	» » By moonlight.	
10450 =	»	»	» » II.	
10451	»	»	» » III.	
10421 =	»	Guernsey.	Moulin Huet and Saints Bay.	
10422 =	»	»	Pleinmont Point.	
10423 =	»	»	The Harbour from Castle Cary.	
10424 =	»	»	Rocquaine Bay.	
10426 =	»	»	St. Peter's Port. Arrival of Boats.	
10427 =	»	»	» General view of Harbour	
10428 =	»	»	Fermain Bay.	
10429 =	»	»	Coast at Gouffre.	
10430 =	»	»	Boat Harbour. La Moye Point.	
10431 =	»	»	Petit Bot.	
10432 =	»	»	Petit Bot Bay.	
10433	»	»	Water Lane. Moulin Huet.	
10434 =	»	»	Cobo.	
10435 =	»	»	Moulin Huet Bay. I.	
10436 =	»	»	» » II.	
10425 =	»	Sark.	Dixcart Bay.	
10452 =	»	»	The Coupee.	
10453 =	»	»	Creux Harbour.	
10454 =	»	»	The Coupee.	
10455 =	»	»	Les Antelets.	
10456 =	»	»	Robin Hood Bay.	

For other Views of Jersey and Guernsey, see PANORAMAS, page 21.

10270 =	Cheddar.	The Village and Lion Rock.
10271	»	The Cliffs.
10276 =	Cheltenham	Promenade looking towards High Street.

Size II, Continued.

10727 =	Cheltenham	Promenade looking towards Queen's Hotel.	10727 =
10728 =	»	Pittville Gardens.	10728 =
10117	Chester.	King Charles' Tower.	10117 =
10118 =	»	The Groves.	10118 =
10119 =	»	The Cross and Rows.	10119 =
10120 =	»	Eastgate Street and Newgate Street.	10120 =
10121 =	»	The Cathedral.	10121 =
10122	»	The Water Tower.	10122 =
10123 =	»	Eccleston Ferry.	10123 =
10124 =	»	View on the Dee.	10124 =
10220 =	Chichester.	Cathedral.	10220 =
10221	»	Cross.	10221 =
10304 =	Christchurch.	The Priory Church.	10304 =
10252 =	Clacton-on-Sea.	The Pier.	10252 =
10253 =	»	Cliffs and Beach.	10253 =
10254 =	»	The Front and Pier from Pier end.	10254 =
10255 =	»	Yacht Starting.	10255 =
10256 =	»	From the Cliffs.	10256 =
10267 =	Clevedon.		10267 =
10138	Clovelly	from the Hobby Drive.	10138 =
10139	»	High Street.	10139 =
10140 =	»	Harbour.	10140 =
10141 =	»	from the Harbour.	10141 =
10157 =	Combemartin.	General view.	10157 =
	Coniston,	see Lakes.	
	Conway,	see Wales.	
10322 =	Corfe.	Castle.	10322 =
10748 =	Cornwall.	Newlyn. General View.	10748 =
10749 =	»	Penzance. General View.	10749 =
10750 =	»	» Logan Rock.	10750 =
10751 =	»	» Land's End.	10751 =
10752 =	»	» St. Michael's Mount.	10752 =
10753 =	»	St. Ives. Gurnard's Head.	10753 =
10754 =	»	» General View.	10754 =
10755 =	»	» Tregenna Castle.	10755 =
10756 =	»	» Porthminster Beach.	10756 =
10757 =	»	» Porthminster Bay.	10757 =
10758 =	»	Truro. General View.	10758 =
10759 =	»	Falmouth.	10759 =
10760 =	»	» The Beach.	10760 =
10761 =	»	King Harry Passage, near Falmouth.	10761 =
10762 =	»	St. Mawes, near Falmouth.	10762 =
10763 =	»	Lizard Point.	10763 =

Size II, Continued.

10764 =	Cornwall.	Coast View, Kynance.	
10765 =	»	Kynance Cove.	
10766 =	»	Newquay. Beacon Cove.	
10767 =	»	» Towan Head.	
10768 =	»	» The Sands.	
10769 =	»	» from East.	
10819 =	Cromer,	from East Cliff I.	
10820 =	»	» » II.	
10821 =	»	Golf Club House.	
10822 =	»	Parish Church.	
10823 =	»	"A Pretty Corner".	
	Cromford,	see Derbyshire.	
10846 =	Crosby	Garett.	
10103 =	Dartmouth.	Mouth of the Dart with Castle.	
10104 =	»	General View.	
10500 =	»	from Dyer's Hill.	
10529 =	»	Old Mill Creek.	
10530 =	»	Perry Pomeroy Castle.	
10499 =	»	Greenaway Ferry.	
10714	»	Butter Walk.	
10715 =	»	King's Wear.	
10716 =	»	Old Mill Creek.	
10501 =	»	Sharpham on the Dart.	
10479 =	Dawlish.		
10480 =	»		
10505 =	»	View from Lea Mount.	
10506 =	»	Boating Beach.	
10507 =	»	from Station.	
10705 =	»	Bathing Cove.	
10706 =	»	from Royal Hotel.	
10395 =	Derbyshire.	Matlock Bath from Heights of Jacob.	
10396 =	»	High Tor. I.	
10397 =	»	» II.	
10398	»	» III.	
10399 =	»	Matlock, with Promenade and Heights of Jacob.	
10400 =	»	» South Parade and Heights of Abraham.	
10402 =	»	» Bank, with view of Hydropathic Establishment.	
10403 =	»	Haddon Hall.	
10404 =	»	» » From Terrace Steps.	
10405 =	»	» » The Terrace Steps.	
10871 =	»	» » From Steps.	
10872 =	»	» »	
10873 =	»	» » Dorothy Vernon's Steps.	
10406 =	»	» » » Walk.	
10874 =	»	» » Ball Room.	

Size II, Continued.

10462 =	Derbyshire.	The Blackrock, Cromford.	10462 =
10463 =	»	Dovedale, Tissington Straits.	10463 =
10464 =	»	» Stepping Stones.	10464 =
10465	»	» Lion Rock.	10465
10877 =	»	» Tissington Spires.	10877 =
10773 =	»	Chatsworth House.	10773 =
10774 =	»	» » and Bridge	10774 =
10775 =	»	Buxton. The Pavilion.	10775 =
10776 =	»	» The Gardens.	10776 =
10852 =	»	» from the Town Hall.	10852 =
10853 =	»	» At Lover's Leap.	10853 =
10854 =	»	» Ashwood Dale.	10854 =
10855 =	»	Middleton Dale.	10855 =
10856 =	»	Grindleford Bridge.	10856 =
10857 =	»	Eyam Church.	10857 =
10858 =	»	» Plague Cottages.	10858 =
10859 =	»	Hathersage. Toad Rock.	10859 =
10860 =	»	» Lead Mills Bridge.	10860 =
10861 =	»	Castleton. General view.	10861 =
10862 =	»	» Peak Cavern.	10862 =
10863 =	»	» Peveril Castle.	10863 =
10864 =	»	» The Winnets.	10864 =
10865 =	»	Chee Dale, Miller's Dale.	10865 =
10866	»	Chee Toe, Miller's Dale.	10866
10867 =	»	Miller's Dale.	10867 =
10868 =	»	Ashford. Old Mill.	10868 =
10869 =	»	Bakewell, from river.	10869 =
10870 =	»	Bakewell Bridge.	10870 =
10875 =	»	Whitchurch Gardens, Darley Dale.	10875 =
10876 =	»	Monsal Dale.	10876 =
10293 =	Dover.	Admiralty Pier.	10293 =
10294 =	»	Sea Front.	10294 =
10299 =	»	The Castle from the Park.	10299 =
10319 =	»	The Castle.	10319 =
10330 =	»	Shakespeare's Cliff.	10330 =
10331 =	»	The Cliffs.	10331 =
10020 =	Durham.	The Cathedral.	10020 =
10021 =	»	The Castle.	10021 =
10022 =	»	The Cathedral and Castle from the Bridge.	10022 =
10276	Eastbourne.	Beachy Head from above.	10276
10296 =	»	The Parade.	10296 =
10309 =	»	The Wishtower.	10309 =
10310 =	»	The Parade from the Wishtower.	10310 =
10328 =	»	Beachy Head from below.	10328 =
10112 =	Ely.	The Cathedral from the River.	10112 =

Size II, Continued.

10068=	Exeter.	High Street.	10068=
10085=	»	Cathedral, East Front.	10085=
10086=	»	» West »	10086=
10087=	»	Countess Weir.	10087=
10088=	»	Exbridge.	10088=
10089=	»	From the River.	10089=
10478=	Exmouth.	St. John's in the Wilderness.	10478=
10495=	»	The Beach.	10495=
10504=	»	The Esplanade.	10504=
10632=	»	The Plantation.	10632=
10496=	»	Budleigh Salterton.	10496=
10285=	Folkestone.	Lower Sandgate Road.	10285=
10311=	»	The Beach and Pier.	10311=
10312=	»	The Lees.	10312=
10315=	»	St. Mary's Church.	10315=
10324=	»	Lees Promenade and Bandstand.	10324=
10325=	»	Lees Promenade.	10325=
10326=	»	The Harbour.	10326=
10908=	»	Victoria Pier.	10908=
10909=	»	West Cliff.	10909=
10910=	»	Arrival of Boulogne Boat.	10910=
	Sandgate,	see Sandgate.	
10666=	Furness Abbey.	General View.	10666=
10664=	»	The Cloisters.	10664=
10665=	»	Looking East.	10665=
10722=	Gloucester	Cathedral from Church Tower.	10722=
10723=	»	» » River.	10723=
10724=	»	Westgate Street.	10724=
10725=	»	Southgate Street.	10725=
10737=	Grange-over-Sands	from Hotel.	10737=
10738=	»	Hotel from Gardens.	10738=
10739=	»	View in Gardens.	10739=
10740=	»	Beach.	10740=
	Guernsey,	see Channel Islands.	
	Haddon Hall,	see Derbyshire.	
	Hadleigh Castle,	see Southend.	
10048=	Hastings.	View from the East Cliff.	10048=
10049=	»	East Cliff, with Beach and Fish Market.	10049=
10050=	»	The Castle.	10050=
10051=	»	The Parade.	10051=
10052=	»	The Pier.	10052=
10053=	»	Yachts Starting.	10053=
10066=	»	Lovers' Seat.	10066=

Size II, Continued.

- 10067 = **Hastings.** Hollington Church.
 10078 || » Fairlight Glen.
 10100 = » Dripping Well.
 10808 = **Hereford.** Cathedral and Wye Bridge.
 10809 = » Cathedral, N. W.
 10810 = » Choir Screen.
 10911 = **Hythe Church.** The Crypt.
 10316 = **Hurstmonceaux Castle.**
 10147 = **Ilfracombe** from Hillsborough.
 10148 || » Capstone Steps.
 10149 = » Beach and Town from Capstone.
 10150 = » Lantern Hill.
 10151 = » Town and Hotels from Capstone.
 10152 = » Capstone and Shelter, from the Arcade.
 10153 = » Capstone Hill from Ilfracombe Hotel.
 10154 = » Tor's Walk.
 10155 = » Watermouth Castle.
 10156 || » » Caves.
 10126 = **Kenilworth.** The Castle.
 10850 = **Kirkby Stephen.** Stenkreth.
 10672 = **Lancaster Castle.** The Gateway.
 10681 = **Lake District.** Ambleside.
 10037 = » Ambleside Stepping Stones.
 10682 || » » Stock Ghyll Force.
 10685 = » Buttermere and Crummock Water.
 10686 = » » Ashness.
 10016 = » Borrowdale Valley, from Bowder Stone.
 10019 = » Bowder Stone.
 10690 = » Borrowdale Birches, I.
 10991 || » » » II.
 10693 = » Coniston.
 10010 = » Derwentwater, Keswick, from Friars' Crag.
 10032 = » » and Keswick.
 10033 = » » » Friars' Crag.
 10683 = » » Keswick, Crosthwaite Church.
 10031 = » » Lodore Hotel, Waterlily Bay.
 10689 || » » » Falls.
 10012 = » » Scarfelse Bay.
 10013 = » » from Castle Hill.
 10014 = » » Ashnessbridge and Skiddaw.
 10029 = « On Derwentwater. Cattle Study.
 10030 = » » » »
 10687 = » » Boat Landing.
 10688 = » » Broomhill Point.
 10015 = » Skiddaw, from Latrigg.

Size II, Continued.

- 10018 = **Lake District.** Honister Pass.
 10017 = » Grasmere Church.
 10035 = » Grasmere.
 10627 = » » from Red Bank.
 10628 = » » » Prince of Wales Hotel.
 10006 = » Ridal Water I.
 10007 = » » » II.
 10008 = » » » III.
 10692 = » Thirlmere and Helvellyn.
 10488 = » Ullswater from Place Fell.
 10483 = » » » S.W.
 10482 || » » Stybarrow Crag.
 10481 || » » Aira Force.
 10492 = » » from Gowbarrow Park.
 10493 = » » Hotel and Lake. Patterdale.
 10490 = » » from Place Fall. Howtown Pier.
 10491 = » » Howtown Bay.
 10489 = » » Pooley Bridge Pier.
 10486 = » » Eamont Bridge, near Penrith.
 10487 = » » and River Eamont from Pooley Bridge.
 10484 = » » Lowther Castle, near Penrith.
 10485 = » » Brougham Castle, near Penrith.
 10011 = » Windermere, from Orest Head.
 10741 = » » from the Summit.
 10629 = » » » Orest Head.
 10036 = » » Brathay Rock and Waterhead Hotel.
 10678 = » » and Langdale Pikes.
 10679 = » » Langdale Pikes.
 10684 = » » » Valley.
 10673 = » » from Belsfield Hotel.
 10674 = » » Steam Ferry.
 10009 = » » and Bowness.
 10034 = » » Bowness, from Bellisle.
 10617 = » » » » Birch Holm.
 10675 = » » » Boat Landing.
 10676 = » » » from Ferry Hotel.
 10677 = » » » Bay and Belsfield Hotel.
 10680 = » Blea Tarn.
- Llandudno, see Wales.**
- 10144 = **Lee (Devon).** General view.
 10145 = » » Old Post Office.
 10146 = » » Swiss Cottage.
 10804 || **Lichfield.** Cathedral N.W.
 10805 = » » South Side.
 10806 = » » Choir East.

Size II, Continued.

- 10807 = **Lichfield.** St. Chad's Church.
 10811 = **Lincoln.** from S.E.
 10812 = » Cathedral, S.W.
 10813 = » » Choir East.
 10814 = » » » »
 10279 = **Liverpool.** New Brighton Pier.
 10280 = » Lime Street and St. George's Hall.
 10281 = » New Brighton Beach.
 1275 || **London and Suburbs.** Hampton Court Palace (Gateway).
 1501 || » The Albert Memorial.
 1502 = » The Tower.
 1503 = » Westminster Abbey.
 1504 = » Royal Exchange.
 1505 = » Houses of Parliament, St. Stephen's Hall (Interior).
 1506 = » Kensington-Gardens. The Fountains.
 1607 = » On Holborn Viaduct.
 10090 = » Trafalgar Square, with Nelson's Column.
 10277 = » Rotten Row from Hyde Park Corner.
 10407 = » Tower and Tower Bridge.
 10785 = » Tower Bridge II.
 10786 = » » III.
 10734 || » Trafalgar Square.
 10735 = » Westminster Abbey (North door).
 10736 = » British Museum.
 10570 || » A Yeoman of the Guard.
 10784 || » Cheapside.
 10787 = » Piccadilly Circus
 10788 = » Thames Embankment.
 10789 = » Houses of Parliament.
 1507 = » Hampton Court. Park.
 1508 = » » » Palace.
 1509 || » Kew Gardens. Chinese Pagoda.
 1510 = » » The Palm House.
 1511 = » » The Museum.
 1512 = » **Richmond.** The Bridge.
 1513 || » » The Terrace.
 1514 = » » Star and Garter Hotel.
 1515 = » » View of the Thames.
 10278 = » » The Terrace.
 1516 = » **Windsor.** Ruins at Virginia Water.
 1517 = » » View of the Castle from the River.
 10609 = » The Bridge from below Maidenhead.
 10641 = » Clivedon Reach and House.
 10642 = » » Woods, from Ferry.
 10643 = » » » below Cookham Ferry.

Size II, Continued.

- 10729 = **London and Suburbs** Caversham, near Reading.
 10730 = » Whitechurch, from Pangbourne Bridge.
 10731 = » Goring and Streatley.
 10732 = » View at Goring, below the Weir.
 10733 = » Great Marlow.
 1520 = » Burnham Beeches.
 10116 = » Dartford, Messrs. Burroughs, Wellcome & Co.'s Factory.
- 10248 = **Lowestoft.** The Terrace.
 10249 = » The Harbour.
 10250 = » The Sands from Royal Hotel.
 10251 = » Entrance to the Jetty.
 10836 = » Inner Harbour.
 10837 = » Royal Hotel from Pier.
 10838 = » The Pier.
 10839 = » Pier Pavilion.
 10840 = » Pier Head I.
 10841 = » » » II.
 10842 = » St. Margaret's Church.
 10843 = » High Lighthouse.
 10844 = » Lighthouse Score.
 10845 = » Belle vue Jubilee Bridge.
- Lowther Castle, see Lakes.**
- 10800 = **Lulworth Cove.**
 10801 = » Durdle Door.
- 10158 = **Lynnton and Lynmouth.** Lynmouth Harbour.
 10159 = » The Harbour, with Tower, from above the Rising Sun Inn.
 10160 = » General view.
 10161 = » View of Lynmouth from Lynton.
 10162 || » Glen Lyn. The Upper Falls.
 10163 = » Glen Lyn Falls and Rustic Bridge.
 10164 || » View in East Lyn.
 10165 || » » » with Lynton.
 10166 = » Watersmeet and Refreshment House.
 10167 = » Exmoor. Malmsmead Inn and Bridge. Doon Valley.
 10168 = » The Valley of Rocks.
 10169 = » The Devil's Cheesewring in the Valley of Rocks.
 10170 = » Castle Rock in the Valley of Rocks.
 10171 = » Ley (Lee) Abbey.
 10172 = » Hunter's Inn.
- 10199 = **Man, Isle of.** Douglas. Harbour with Steamers.
 10200 = » Douglas. The Beach.
 10181 = » » Loch Promenade.
 10182 = » » Pier.
 10183 = » » Lighthouse and Bathing Cove.

Size II, Continued.

- 10184= **Man, Isle of.** Douglas. Kirk Braddan.
 10180 || » Douglas. Groudle Glen and Hotel.
 10466 || » Groudle Glen.
 10179= » Laxey. General view.
 10197 || » » The Wheel.
 10178 || » » Dhoon Glen Waterfall.
 10194= » Ramsey. General view.
 10195= » » Iron Bridge.
 10196= » » Rough Sea.
 10175= » » Ballower Mount.
 10176= » » The Park.
 10177= » » St. Maughold Church.
 10173 || » » Sulby Glen, Upper Falls.
 10174= » » Sulby Bridge.
 10198= » Peel. General view of Castle.
 10188= » » St. Germain's Cathedral.
 10185= » » Glen Helen Hotel and Pleasure Ground.
 10186 || » » » Waterfall.
 10187 || » » Glen Meay Waterfall.
 10193= » Port Erin. General view.
 10191= » » Bradda Head.
 10192= » » View from Bradda Head.
 10190 || » Port St. Mary. Sugar Loaf Rock.
 10189= » Castletown. Rushen Castle.
 10227= **Margate.** The Jetty. I.
 10228= » The Beach.
 10229= » The Harbour. I.
 10234= » » II.
 10230= » The Promenade.
 10231= » Beach and Ladies' Bathing Place.
 10232= » The Gap.
 10233= » Kingsgate Castle.
 10235= » The Fort.
 10282= » The Jetty. II.
 10142= **Morthoe.** Barricane Shell Beach.
 10143= » The Church.
 10667= **Morecambe.** Promenade East.
 10668= » Promenade West.
 10669= » West End Pier.
 10670= » Heysham Church.
 10671= » » Village.
 10317= **Netley Abbey.** Interior.
 10336= » Exterior.
 1544= **Newcastle-on-Tyne.** Jesmond Dene Old Mill.

Size II, Continued.

- 10125 || **Newcastle-on-Tyne.** Jesmond Dene.
 10001 = » Blackgate and Castle.
 1545 = » Tynemouth.
- 10475 = **Newforest.** Rufus Stone.
 10136 = **Norwich.** Thorpe, Old Reach.
 10137 = » Thorpe, New Reach.
 10040 = » » Church and River.
 10079 || » The Cathedral.
 10041 = » Pull's Ferry.
- 10065 = **Oxford.** New College.
 10095 = » New College, Garden Front.
 10072 || » Magdalen Tower.
 10084 = » » » from River.
 10073 || » Tom Tower.
 10083 = » Magdalen College, from the River.
 10127 = » » » Founders' Tower and Cloisters.
 10096 = » Christchurch College.
 10097 = » Trinity College.
 10098 = » Sheldonian Theatre.
 10128 = » St. John's College.
 10129 = » Worcester College.
 10130 = » Merton and Christ Church Colleges.
 10135 = » General view and High Street.
- 10577 = **Paignton.** The Sands.
 10578 = » and Torquay.
- Penmaenmawr,** see **Wales.**
- Penrith,** see **Lake District.**
- 10815 = **Peterborough.** Cathedral, West front.
 10816 = » » from South.
- 10300 = **Pevensey.** Castle.
- 10054 = **Plymouth.** Plymouth, from Mount Edgecumbe.
 10055 = » The Hoe, from the Rusty Anchor.
 10056 = » The Pier, with Drake's Island.
 10057 = » The Impregnable Training Ship.
 10058 = » Saltash Bridge.
 10101 = » Ivybridge, the Bridge.
 10102 = » » general view.
 10275 || » Eddystone Lighthouse.
- 10792 = **Portland.** Chesil Beach.
 10793 = » Cove.
- 10287 = **Portsmouth.** Town Hall.
 10292 = » Harbour.
 10467 = » The "Victory" (Nelson's Flagship).

Size II, Continued.

- 10468 || **Portsmouth.** The "Victory" (Nelson's Flagship).
 10236 = **Ramsgate.** Sands.
 10237 = » Harbour. I.
 10238 = » » II.
 10239 = » New Road.
 10344 = » The Waterfall.
 10070 = **Salisbury.** General view.
 10071 || » Cathedral.
 10069 = » Plain.
 10099 = » The Cathedral, from the River.
 10497 = **Sandgate.**
 10498 = » The Promenade.
 10879 = **Sandhurst.** Royal Military College.
 10880 = » » » »
 10881 = » » » » Cricket Ground.
 10882 = » » » » Bathing Lake.
 10883 = » » » » View in Grounds.
 10884 || » » » » The Drive.
Scarborough, see **Yorkshire.**
Shanklin, see **Isle of Wight.**
 10824 = **Sheringham,** from East Cliff.
 10825 = **Skegness.** The Pier.
 10826 = » The Parade.
 10827 = » Lunsley Road.
 10263 || **Southampton.** Westgate.
 10286 = » Old Tower Wall.
 10298 = » South Shore.
 10339 = » The Avenue.
 10343 || » The Bar Gate.
 10211 = **Southend-on-Sea.** View from the Pier. I.
 10212 = » Pier and Bathing Place looking East.
 10213 = » General view.
 10214 = » Hadleigh Castle.
 10215 = » The Pier.
 10216 = » View from the Pier. II.
 10217 = » The Cart Parade and Yachts.
 10218 = » West Parade.
 10201 = **Southport.** The Promenade and Lakes.
 10202 = » Lord Street.
 10203 = » Parade from the Pier.
 10204 = » The Pier.
 10219 = **Southsea Beach.**
 10329 = » »

Size II, Continued.

- 10042 = **Stratford-on-Avon.** Trinity Churchyard.
 10043 = » Shakespeare's Memorial Theatre.
 10080 = » » Birthplace.
 10081 = » Ann Hathaway's Cottage.
 10274 = » Trinity Church, from river.
 10313 = **Swanage.** General view.
 10333 = » Bay.
 10794 = » Beach.
 10795 = » »
 10796 = » The Globe.
 10797 = » Tilly Whim Caves, near Swanage.
 10798 = » Studland Church, near Swanage.
 10799 || » » » Interior.
 10508 = **Teignmouth.** View from E. Cliff.
 10509 = » View from Torquay Road.
 10510 = » The Den.
 10511 = » » Beach.
 10707 = » » Den.
 10708 = » Shaldon Bridge.
 10709 = » View from the Ness.
 10710 = » The Ness.
 10059 = **Torquay,** from Tale Hill.
 10060 = » From Waldron Hill.
 10502 = » Princess Gardens.
 10711 = » from Rock Walk.
 10062 = » Anstey's Cove.
 10712 = » » »
 10061 = » Natural Arch.
 10063 = » Cockington Church.
 10106 = » » Village.
 10528 = » » Forge.
 10105 = » Babbacombe Beach.
 10107 = » Approach to Babbacombe.
 10713 = » Babbacombe Beach.
 10585 = **Totnes.**
 10584 = » Landing Place.
 10717 = » Fore Street.
 1276 || **Tunbridge Wells.** Penshurst Bridge.
 1522 = » Penshurst Place.
 1277 = » Farmhouse, near Tunbridge Wells.
 1521 = » Speldhurst Inn, near Tunbridge Wells.
 10024 = » from Mount Ephraim.
 10025 = » The High Rocks.
 10026 = » The Toad Rock.

Size II, Continued.

10027		Tunbridge Wells.	The Pantiles, looking North.	W	10027
10028		»	The Pantiles, looking South.		10028
10894	=	»	The Common.		10894
10895		»	High Rocks I.		10895
10896		»	» » II.		10896
10897	=	»	Happy Valley.		10897
10898	=	»	Penshurst Castle, near Tunbridge Wells.		10898
10047	=	Warwick.	Warwick Castle.		10047
10046	=	»	The Castle.		10046
10045	=	»	» » from the Bridge.		10045
10044	=	»	» » from the River.		10044
10268	=	Wells.	Cathedral.		10268
10269	=	»	West Front.		10269
10264	=	Weston-Super-Mare.	The Pier.		10264
10265	=	»	from Atlantic Hotel.		10265
10266	=	»	General view.		10266
10391	=	»	The Pier.		10391
10392	=	»	Anchor Head.		10392
10393	=	»	Parade from Anchor Head.		10393
10394	=	»	The Sands.		10394
10790	=	Weymouth.	from the Nothe.		10790
10791	=	»	Jubilee Clock.		10791
1518	=	Wight, Isle of.	Shanklin. The Bridge.		1518
10318	=	»	Shanklin, Old Village.		10318
10337		»	» Chine.		10337
10338		»	» »		10338
10272	=	»	Blackgang »		10272
10273	=	»	The Landslip.		10273
10284	=	»	Ventnor Cottage Hospital.		10284
10288	=	»	» from the Sea.		10288
10297	=	»	» Steephill Cove.		10297
1519	=	»	» » »		1519
10306	=	»	» Cliff Walk.		10306
10307	=	»	» from East Cliff.		10307
10308	=	»	» West »		10308
10334	=	»	» » Road through Undercliff.		10334
10302	=	»	Bonchurch Pond. I		10302
10303	=	»	» » II.		10303
10335	=	»	» Old Church.		10335
10320	=	»	Godshill.		10320
10305	=	»	Carisbrooke, the Village.		10305
10321	=	»	» » Castle.		10321
10470	=	»	The Needles. I.		10470
10472	=	»	» » II.		10472

Size II, Continued.

10469 =	Wight, Isle of.	Alum Bay and the Needles.	10469 =
10474 =	»	Totland Bay.	10474 =
10471 =	»	Freshwater Bay and Stag Rock.	10471 =
10314 =	»	Luccombe Chine.	10314 =
10695 =	»	Ryde, from Pier.	10695 =
10696 =	»	» Apley Tower.	10696 =
10697 =	»	» The Esplanade.	10697 =
10700 =	»	Hotels and Coaches.	10700 =
10694 =	»	» Spencer Road.	10694 =
10703 =	»	Seaview near Ryde. I.	10703 =
10704 =	»	» » » II.	10704 =
10701 =	»	Sandown Bay.	10701 =
10702 =	»	» » from Pier.	10702 =
10698 =	»	Osborne House.	10698 =
10699 =	»	Whippingham Church.	10699 =
10476 =	Winchester.	Cathedral and Avenue.	10476 =
10477 =	»	Cathedral. West Front.	10477 =
10240 =	Yarmouth.	Britannia Pier and Parade.	10240 =
10241 =	»	Yachts starting.	10241 =
10242 =	»	St. Nicholas Church.	10242 =
10243 =	»	Town Hall.	10243 =
10244 =	»	The Beach, Gardens and Jetty.	10244 =
10245 =	»	Britannia Pier.	10245 =
10246 =	»	The Market.	10246 =
10247 =	»	The Jetty.	10247 =
10831 =	Yorkshire.	Bolton Abbey from River.	10831 =
10832 =	»	Bolton Abbey, Stepping Stones, I.	10832 =
10833 =	»	» » » II.	10833 =
10834 =	»	Bolton Woods, the Strid.	10834 =
10366 =	»	Bridlington. Convalescent Home.	10366 =
10367 =	»	» Children's Corner.	10367 =
10368 =	»	» The Parade.	10368 =
10369	»	» Priory Church.	10369 =
10870 =	»	» The Bayle Gate.	10870 =
10371 =	»	» The Harbour.	10371 =
10372 =	»	» » from South Pier.	10372 =
10373 =	»	Flamborough. North Sea Landing.	10373 =
10374 =	»	Thornwick Bay.	10374 =
10375 =	»	Silex Bay.	10375 =
10376	»	Flamborough Lighthouse.	10376 =
10777 =	»	Harrogate. Prospect Hotel.	10777 =
10778 =	»	» The Stray.	10778 =
10779 =	»	» Royal Baths.	10779 =
10780 =	»	» Royal Pump Room.	10780 =
10781 =	»	» Valley Gardens I.	10781 =

Size II, Continued.

10782 =	Yorkshire.	Harrogate.	Valley Gardens II.
10828 =	»	Ilkley,	from N.W.
10829 =	»	»	Cow and Calf Rocks.
10830	»	»	Heber's Ghyll.
10851 =	»	Ingleborough,	from Chapel le Dale.
10387 =	»	Redcar.	The Esplanade.
10388 =	»	»	The Pier.
10389 =	»	»	The Esplanade.
10383 =	»	Saltburn-by-the-Sea.	The Gardens.
10384 =	»	»	The Cat Nab.
10385	»	»	The Lift.
10386 =	»	»	General View.
10360 =	»	Scarborough.	South Bay.
10361 =	»	»	Grand Hotel.
10362 =	»	»	from below Valley Bridge.
10363 =	»	»	The Spa.
10364 =	»	»	The Children's Corner.
10365	»	»	The Castle.
10783	»	Clarence Gardens,	North Bay.
10835	»	Hayburn Wyke,	near Scarborough.
10377 =	»	Whitby.	Robin Hood's Bay.
10456 =	»	»	»
10378 =	»	»	The Abbey.
10379 =	»	»	»
10380 =	»	»	The Pier.
10381 =	»	»	St. Mary's Church.
10382 =	»	»	View from Larpool.
10408 =	»	»	Runswick Bay.
10409 =	»	»	»
10410 =	»	»	Sands.
10457 =	»	»	Glaisdale, Beggars' Bridge.
10458 =	»	»	Staithe's.
10390	»	York.	Micklegate Bar.
10459 =	»	»	From City Walls.
10817 =	»	»	Railway Bridge.
10460 =	»	»	The Minster, S.W.
10461 =	»	»	» S.
10818	»	»	» Choir East.
10257 =	Steamships, &c.	"Koh-i-noor."	
10258 =	»	"Royal Sovereign."	
10259 =	»	"La Marguerite."	
1940 =	»	"Osborne," Royal Yacht.	
1939 =	»	"Hohenzollern."	
1941 =	»	"San Francisco," Flagship, U. S. A.	
1942 =	»	"S. S. Columbia."	

PANORAMAS.

Small Size.

- 4519 **Ilfracombe**, from Hillsborough Hill, about 7 by 17 inches.
 4538 **Jersey**. St. Heliers Harbour. $6\frac{1}{2}$ by $17\frac{3}{4}$ inches.
 4539 **Guernsey**. St. Peter's Port. $6\frac{1}{2}$ by $17\frac{3}{4}$ inches.
 4554 **Exmouth**. View from the Beacon. 7 by $17\frac{3}{4}$ inches.

Middle Size.

- 4508 **Torquay**. Tale Hill to Waldron Hill, from the Pier. 7 by $25\frac{1}{2}$ inches.

b) IRELAND.

Size II.

Unmounted $6\frac{3}{8}$ by $8\frac{3}{4}$ inches.

- 12066 || **Co. Antrim**. Fall in Glengariff.
 12067 = » Rustic Bridge in Glengariff.
 12068 = » Glengariff.
 12079 || » » Ess-na-Crub Fall.
 12069 = » Rope Bridge, Carrick a Rede.
 12073 = » Giant's Causeway.
 12070 = » » » Pleaskin Head.
 12071 = » » » The Honeycombs.
 12072 = » » » The Steuchans.
 12074 = » Portrush.
 12075 = » Glenarm.
 12076 = » Dunluce Castle.
 12065 = » Belfast. Albert Memorial.
 12077 = » Belfast. Cave Hill.
 12078 = » Irish Jaunting Car and Irish Peasant Girl.
 12013 = **Co. Cork**. Eccles Hotel, Glengariff.
 12014 = » At Glengariff.
 12015 = » Bantry Bay.
 12016 = » Tunnel near Glengariff.
 12017 = » Glengariff Harbour.
 12018 = » » Poul na Gurn.
 12019 = » Sugar Loaf Mountain.
 12020 = » Cromwell's Bridge.
 12021 = » Queenstown.
 12022 = » Blarney Castle.
 12023 || » St. Finhar's Cathedral.

Size II, Continued.

- 12024 = **Co. Cork.** Queenstown Harbour.
 12090 = » View from porch of Roche's Royal Hotel, Glengarriff.
 12085 = **Co. Donegal.** Donegal Castle.
 12086 = » Killybegs.
 12087 = » Temple Arch, Horn Head.
 12088 = » Barnesmore Gap.
 12062 = **Co. Down.** Woodside, Rostrevor.
 12063 = » Warrenpoint.
 12064 = » Carlingford Lough.
 12043 = **Co. Dublin.** Dublin Bank of Ireland.
 12044 = » Dublin. St. Patrick's Cathedral.
 12045 = » Killeney and Dalkey.
 12046 = » Dublin. Shelbourne Hotel.
 12047 = » » College Green.
 12048 = » Howth and Ireland's Eye.
 12082 = **Co. Fermanagh.** Enniskillen.
 12083 = » Upper Lough Erne.
 12084 = » Lower Lough Erne.
 12052 = **Co. Galway.** Killary Bay, Connemara.
 12053 = » Erriff Pass.
 12054 = » Irish Jaunting Car and Cottage.
 12055 = » » Farm Yard.
 12056 = » Ballinahinch.
 12057 = » Kylemore.
 12058 || » Irish Spinning Wheel.
 12081 = » Clifden.
 12039 = **Co. Kerry.** At Parknasilla.
 12040 = » Garinish Island, Parknasilla.
 12041 = » At Valentia.
 12042 = » Pass of Ballaghbema.
 12000 = » Killarney. The Macgillicuddy Reeks.
 12001 = » » Meeting of the Waters.
 12002 = » » Eagle's Nest Mountain.
 12003 = » » Ross Castle I.
 12004 = » » » II.
 12005 = » » Old Weir Bridge.
 12006 = » » Lakes from Kenmare Road.
 12007 = » » In the Upper Lake.
 12008 = » » At Innisfallen.
 12009 = » » Muckross Abbey.
 12010 || » » Tore Casade.
 12011 = » » Serpent Lake, Gap of Dunloe.
 12012 = » » Gap of Dunloe.
 12089 = » » Great Southern Hotel.

Size II, Continued.

- 12038 = **Co. Kilkenny.** Kilkenny Castle.
12051 = **Co. Louth.** River Boyne.
12060 = **Co. Mayo.** Menawn Cliffs, Achill.
12061 = » Achill Head.
12059 = **Co. Sligo.** Lough Gill.
12080 || » Glencar Fall.
12025 = **Co. Wicklow.** The Dargle Bridge.
12026 = » Lover's Leap, Dargle.
12027 = » Powerscourt Waterfall.
12028 = » Enniskerry.
12029 = » Bray I.
12030 = » » II.
12031 = » The Devil's Glen.
12032 = » In the Dargle.
12033 || » Poulaphuca Fall.
12034 = » Meeting of the Waters, Vale of Avoca.
"There is not in this wide world a valley so sweet
As the vale in whose bosom these bright waters meet."
12035 = » Vale of Avoca.
12036 = » Sugar Loaf Mountain, from Powerscourt.
12037 = » Glendalough.
12049 = **Co. Waterford.** The Quays.
12050 = » Lismore Castle.

~~~~~  
c) SCOTLAND.

Size II.

Unmounted 6<sup>3</sup>/<sub>8</sub> by 8<sup>3</sup>/<sub>4</sub> inches.

- 1278 = **Bannatyne.** Kyles of Bute.  
1523 = **Pass of Brander.**  
1524 = **Oban.** General view.  
10002 = **Edinburgh.** Holyrood Palace.  
10003 = » From the Castle.  
10004 = » Princes Street and Castle, from Scott's Monument.  
10005 = » Princes Street and Calton Hill.  
10023 = » Forth Bridge.
- ~~~~~

## Size VI.

Unmounted 16½ by 20½ inches.

3077 = **Edinburgh.** General view.d) *W A L E S.*

## Size II.

Unmounted 6⅜ by 8¾ inches.

- 10597 = **Aberdovey.**  
 10598 = » From Estuary.  
 10592 = **Aberglaslyn.** Pass I.  
 10593 = » Pass II.  
 10351 || **Aber Falls.**  
 10523 = **Aberystwith.** General view.  
 10524 = » On the Sands.  
 10537 || » At Devil's Bridge.  
 10538 || » Devil's Bridge.  
 10600 = » The Castle.  
 10599 || » Rheidol Falls from Devil's Bridge.  
 10547 = **Bala.** Town and Lake.  
 10548 = » Lake.  
 10549 = » » Llanyeil Church.  
 10349 = **Bangor.** Cathedral.  
 10350 = » Menai Suspension Bridge.  
 10631 = » Menai Straits from Anglesey Column.  
 10516 = » Penrhyn Castle.  
 10602 = **Barmouth.** From Island.  
 10603 = » Porkington Terrace.  
 10525 = » Bridge and Cader Idris.  
 10604 = » Estuary, from Panorama Walks.  
 10605 = » » and Cader Idris.  
 10348 = **Beaumaris Castle.** Banqueting Hall.  
 10594 = **Beddgelert,** from Aberglaslyn.  
 10595 = » Llewelyn Hotel.  
 10352 = **Bethesda.** Slate Quarries.  
 10633 = **Bettws-y-Coed.** General view.  
 10358 || » Fairy Glen.

Size II, Continued.

|       |   |                                        |                               |
|-------|---|----------------------------------------|-------------------------------|
| 10534 |   | <b>Bettws-y-Coed.</b>                  | Fairy Glen I.                 |
| 10572 | = | »                                      | Fairy Glen II.                |
| 10359 | = | »                                      | » Miners' Bridge.             |
| 10566 | = | »                                      | Pont-y-Pair I.                |
| 10567 |   | »                                      | View from Pont-y-Pair II.     |
| 10568 | = | »                                      | » » III.                      |
| 10569 | = | »                                      | » » IV.                       |
| 10532 |   | »                                      | » »                           |
| 10533 |   | »                                      | Roman Bridge I.               |
| 10571 | = | »                                      | » II.                         |
| 10494 | = | »                                      | Fairy Glen. Swallow Falls.    |
| 10573 |   | »                                      | » »                           |
| 10574 | = | »                                      | » »                           |
| 10526 | = | <b>Cader Idris and Dyssyni Valley.</b> |                               |
| 10527 | = | »                                      | and Llyn-y-Cader.             |
| 10515 | = | <b>Capel Curig and Snowdon.</b>        |                               |
| 10346 | = | <b>Carnarvon Castle.</b>               |                               |
| 10347 | = | »                                      | »                             |
| 10634 | = | »                                      | »                             |
| 10635 | = | »                                      | » Interior looking East.      |
| 10655 | = | <b>Carmarthen.</b>                     | Coracle Men.                  |
| 10654 | = | »                                      | Bridge.                       |
| 10656 | = | »                                      | General view.                 |
| 10657 | = | »                                      | Kidwelly.                     |
| 10565 | = | »                                      | » Castle.                     |
| 10563 | = | <b>Colwyn Bay,</b>                     | from the Woods.               |
| 10596 | = | <b>Criccieth Castle,</b>               | from the Parade.              |
| 10356 | = | <b>Conway.</b>                         | Castle and Suspension Bridge. |
| 10620 | = | »                                      | » entrance.                   |
| 10561 | = | <b>Cynight and Moelyn.</b>             |                               |
| 10562 | = | <b>Cwellyn Lake.</b>                   |                               |
| 10649 | = | <b>Denbigh.</b>                        | The Castle.                   |
| 10651 | = | »                                      | » General view.               |
| 10543 | = | <b>Dolgelly and Cader Idris.</b>       |                               |
| 10540 | = | »                                      | Tal-y-Llyn Pass.              |
| 10611 | = | »                                      | » Pen-y-Bont.                 |
| 10612 | = | »                                      | » Tyn-y-Cornet.               |
| 10541 | = | »                                      | Precipice Walk.               |
| 10542 | = | »                                      | » »                           |
| 10544 | = | »                                      | Torrent Walk. I.              |
| 10545 | = | »                                      | » » II.                       |
| 10546 | = | »                                      | » » III.                      |
| 10539 |   | »                                      | Rhaiadr Mawddach.             |

Size II, Continued.

- 10610= **Festiniog**, from Terrace Plas.  
 10564= » Railway. Tan-y-Bwlch.  
 10636= **Gwrych Castle**.  
 10607= **Gwynant Valley**. Llyn Dinas.  
 10608= » Nant Gwynant.  
 10606= **Gwernan Lake** and Cader Idris.  
 10601= **Harlech Castle**.  
 10580= **Holyhead**.  
 10581= » South Stack Lighthouse.  
 10582= » » Rocks.  
 10522= **Llanberis**.  
 10517= » Pass I.  
 10518= » » II.  
 10536 || » Cennant Mawr. Lower Fall.  
 10586= » » » The Glen.  
 10587= » Llyn Peris Pass.  
 10588= » and Llyn Peris.  
 10589= » Snowdon from Pardarn Llyn.  
 10590= » St. Peris Church.  
 10591= » Dolbadarn Castle.  
 10614= **Llandudno**.  
 10619= » from the Great Orme's Head.  
 10615= » On the Beach.  
 10616= » Happy Valley.  
 10357= » » »  
 10613= » Iron Pier.  
 10618= » Marine Drive.  
 10512= » The Lighthouse.  
 10552= **Llangollen**.  
 10519= » General View.  
 10551= » The Bridge.  
 10555= » Canal Walk.  
 10554= » Plas Newydd.  
 10553= » Pontycysylltau Aqueduct.  
 10556= » Berwyn Valley.  
 10557= » » Chain Bridge Hotel.  
 10558= » » Horseshoe Falls.  
 10559 || » Valle Crucis Abbey.  
 10560= » » » » Interior looking W.  
 10626= **Llanrwst**.  
 10521= **Llanfairfechan**. The Parade.  
 10353= **Nant Francon Pass**.  
 10354= » Lake Gwgen.

Size II, Continued.

- 10625 = **Nant Francon Pass.** Ogwen Falls.  
 10770 = **Pembroke Castle.**  
 10575 = **Penmaenmawr.**  
 10576 = » from Holyhead Rd.  
 10535 || » Fairy Glen Waterfall.  
 10579 = » » »  
 10355 || » » » The Bridge.  
 10646 = **Rhyl.** The Sands.  
 10648 = » » Pier.  
 10647 = » Rhuddlan Castle.  
 10644 || » Bodelwyddan Church (Exterior).  
 10645 = » » » (Interior).  
 10653 || » Dyserth Falls.  
 10650 = **St. Asaph.** Cathedral from the River.  
 10652 = » Cathedral.  
 10621 = **Snowdon,** from Llyn Llydaw.  
 10622 = » Railway.  
 10623 = » from Carnarvon Road.  
 10520 = » » the Glaslyn.  
 10624 = » Railway and Crib Goch.  
 10513 = » » The Last Mile  
 10514 = » » At the Summit.  
 10720 = **Tenby.**  
 10660 = » North Sands.  
 10662 = » South »  
 10663 = » Harbour.  
 10661 || » View at Tenby.  
 10719 = » Fort Catherine.  
 10721 = » Castle.  
 10531 || **Trefriew.** Fairy Falls.  
 10583 = » Steamboat Pier.  
 10630 = » Llyn Crafnant.  
 10550 = **Vyrnwy.** Lake and Hotel.  
 10658 || **Welsh Costumes.**  
 10659 || » »



# DENMARK.

---

## Size I.

Unmounted  $4\frac{3}{4}$  by  $6\frac{1}{2}$  inches.

567 = **Copenhagen.** Skodsborg Hotel.

---

## Size II.

Unmounted  $6\frac{3}{8}$  by  $8\frac{3}{4}$  inches.

- 6383 = **Copenhagen.** Exchange Hall.  
 6384 = » Frederiksborg Castle.  
 6385 = » Hermitage, with view on the Parc.  
 6386 = » Helsingborg.  
 6387 = » Thorwaldsen Museum.  
 6388 = » Royal Theatre.  
 6389 = » Klampenborg Hermitage.  
 6390 = » Hohbrücke Square.  
 6391 = » Tivoli. The Entrance.  
 6392 || » Saviour Church.  
 6393 = » A part of the Castle with the Embankment.  
 6394 = » General view.  
 6395 = » The Embankment Street.  
 6396 = » Tivoli.  
 6419 || » Marble Church.



## HOLLAND.

## Size II.

Unmounted  $6\frac{1}{8}$  by  $8\frac{3}{4}$  inches.

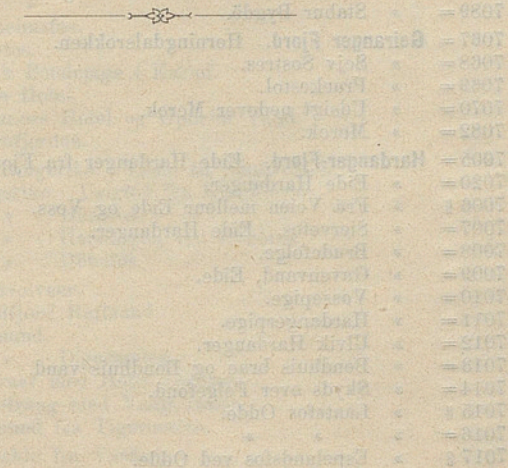
- 6067 = **Amsterdam.** Munttoren.  
 6068 = » Oude Schans.  
 6069 = » Kloveniers Burgwal.  
 6070 = » Binnenamstel.  
 6071 = » Groenburgwal.  
 6100 = » Ryks-Museum.  
 6101 = » Het Central Station.  
 6102 = » De Hoogesling.  
 6103 = » St. Nicolaas Kerk.  
 6104 = » Dam, Paleis en Kerk.  
 6109 = » De Buitenamstel.  
 6110 = » Prins Hendrikkade.  
 8464 = » Voorburgwal en Nicolaskerk.  
 8465 = » Vischmarkt en Waag.  
 8466 = » Nieuwmarkt en Waag.  
 6107 = **Arnhem.** Groote Markt.  
 6111 = » met Rijn.  
 6127 = » Lauwers Gracht.  
 6128 = » Vijver, Helm'scher Berg.  
 6129 = » Beekhuizen.  
 6130 = » Kasteel Rösendaal.  
 8469 = » Janssingel.  
 8470 = » Velperplein.  
 8471 = **Delft.** Haagsche Toren-Watertoren.  
 8472 = » Oostertoren.  
 8473 || » Vischmarkt en Nieuwe Kerk.  
 8474 || » Stadhuis.  
 8461 || **Dordrecht.** Voorstraatshaven.  
 8462 = » Hontzaagmolens aan den Nordendijk.  
 8656 = » Dam en Maashaven.  
 8657 = » Groothoofd.  
 8658 || » By Dordrecht.

## Size II, Continued.

|        |                       |                                              |  |
|--------|-----------------------|----------------------------------------------|--|
| 6139 = | <b>Haag.</b>          | Binnenhof.                                   |  |
| 6140 = | »                     | Rittersaal.                                  |  |
| 6141 = | »                     | Prinzesse-Gracht.                            |  |
| 6142 = | »                     | Wyver.                                       |  |
| 6143 = | »                     | Mauritshuis                                  |  |
| 6144 = | »                     | Schloss im Bosch.                            |  |
| 6145   | »                     | Stadhuis.                                    |  |
| 8475   | »                     | Nationaalgedenkteeken Plein 1813.            |  |
| 8476 = | »                     | Vijverberg.                                  |  |
| 8477 = | <b>Haarlem.</b>       | Ruine van Brederode.                         |  |
| 8478 = | »                     | Stadhuis.                                    |  |
| 8480 = | »                     | Sparne mit Windmolen.                        |  |
| 6135 = | <b>Leiden.</b>        | Stadhuis.                                    |  |
| 6136 = | »                     | Korenbeurs met Stadhuistoren.                |  |
| 6137 = | »                     | Gezicht van der Rijnsburgerbrug.             |  |
| 6138 = | »                     | van der Werf Park.                           |  |
| 8483   | »                     | Delftsche Poort.                             |  |
| 8467 = | <b>Eiland Marken.</b> | Vischerskinderen.                            |  |
| 8468 = | »                     | Vischershaven en Kerkbuurt.                  |  |
| 6105 = | <b>Nijmegen.</b>      | Groote Markt.                                |  |
| 6106 = | »                     | Stadhuis en Groote Markt.                    |  |
| 6112 = | »                     | Ruine Valkhof.                               |  |
| 6113 = | »                     | Stad.                                        |  |
| 6114 = | »                     | Belvédère.                                   |  |
| 6115 = | »                     | Hotel Berg en Dal.                           |  |
| 6116   | »                     | Carolingische Kapel.                         |  |
| 6131 = | »                     | Kronenburger Park.                           |  |
| 6149 = | <b>Rotterdam.</b>     | Anzicht op de oude Haven en Plan <i>b.</i>   |  |
| 6150 = | »                     | Anzicht op de Maasbruggen en de Koningsburg. |  |
| 6151 = | »                     | De twee Bruggen ower de Maas.                |  |
| 6152 = | »                     | De Leuve-Haven.                              |  |
| 6153 = | »                     | Gezicht op de Rivier de Maas.                |  |
| 6154 = | »                     | Rivier de Maas in Rotterdam.                 |  |
| 6155 = | »                     | De Rijnhaven.                                |  |
| 6156 = | »                     | Delft'sche Poort.                            |  |
| 6157 = | »                     | Coolvest.                                    |  |
| 8484 = | »                     | Vischmarkt.                                  |  |
| 8485 = | »                     | Spaansche Kade.                              |  |
| 8486 = | »                     | De Kolk.                                     |  |
| 8487 = | »                     | Delft'sche Vaart.                            |  |
| 6146 = | <b>Scheveningen.</b>  | Scheveninger Strasse.                        |  |
| 6147 = | »                     | Blick auf Strand und Kurhaus.                |  |
| 6148 = | »                     | Kurhaus.                                     |  |
| 8785 = | »                     | Hotel Rauch en Seinpost.                     |  |

## Size II, Continued.

- 8736 = **Scheveningen.** Strandgezicht I.  
 8737 = » Strandgezicht II.  
 8738 = » » III.  
 8739 = » Hôtel d'Orange.  
 8740 = » Hôtels Vuurtoren en Gedenknaald 1830.  
 8792 = » Pinken.  
 8793 = » Damesbaden.  
 9227 = » Kursal, Hotels en Seinpost.  
 6072 = **Utrecht.** Oude Gracht Hamburgerbrug.  
 6073 = » Oude Gracht Viehbrug.  
 6074 = » Oude Gracht Bakkerbrug.  
 6075 = » Weerd-Barrière.  
 6108 = » Maliebaan.  
 6132 = » Ansicht aus dem Park.  
 6133 = » Studie aus dem Zeister-Bosch.  
 6134 = » Maliesingel Knappelbrug.



## NORWAY.

## Size II.

Unmounted  $6\frac{3}{8}$  by  $8\frac{3}{4}$  inches.

- 7079 = **Alesund.**  
 7001 = **Bergen.**  
 7002 = » fra Walkendorffs Taarn.  
 7003 = » Fisketorvet.  
 7058 = » Panorama I.  
 7059 = » » II.  
 7004 = » Fantoft Kirke.  
 7083 = **Christiania.** Panorama fra St. Hanshaugen.  
 7084 = » Storthings bygningen.  
 7085 = » Oscarshal.  
 7086 = » Carl Johans Gade med Slotted.  
 7087 || » Gols Kirke.  
 7088 = » Gols Kirke med Hovestuen og Staburet.  
 7089 = » Stabur Bygdö.  
 7067 = **Geiranger Fjord.** Horningdalsrokken.  
 7068 = » Sejv Sostres.  
 7069 = » Prækestol.  
 7070 = » Udsigt nedover Merok.  
 7082 = » Merok.  
 7005 = **Hardanger-Fjord.** Eide Hardanger fra Fjorden.  
 7020 = » Eide Hardanger.  
 7006 || » Fra Veien melleur Eide og Voss.  
 7007 = » Siervefos. Eide Hardanger.  
 7008 = » Brudefølge.  
 7009 = » Gavenvand, Eide.  
 7010 = » Vossepipe.  
 7011 = » Hardangerpipe.  
 7012 = » Ulvik Hardanger.  
 7013 = » Bondhuis brae og Bondhuis vand.  
 7014 = » Skyds over Folgefond.  
 7015 || » Laatefos Odde.  
 7016 = » » »  
 7017 || » Espelandsfos ved Odde.

## Size II, Continued.

- 7018 = **Hardanger Fjord.** Fra Veien mellem Laatefos og Odde.  
 7019 = » Buarbrae.  
 7021 = » Odde Udsigt over Odde.  
 7022 = » » fra Vikinghang.  
 7023 = » » Udsigt fra Fjorden..  
 7024 || » » Buarbrae.  
 7025 = » » »  
 7026 = » Sandven Vand Odde, Hardanger.  
 7027 = » Sorfjord fra Odde.  
 7028 || » Odde Skjeggedalsfos, I.  
 7029 = » » » II.  
 7030 || » Tyssestrengene.  
 7031 = » Vik i Eidfjord.  
 7032 || » Veien til Vöringfos.  
 7033 || » Vöringfos.  
 7034 = » Vöringfos mer Bröen.  
 7035 = » Udsigt.  
 7036 = » Vossebanen.  
 7037 = » Tvinde Hotel med Tvindefos.  
 7038 || » Tvindefos, Voss.  
 7039 = » Parti fra Veien mellem Voss og Stalheim.  
 7040 = » Hotel Stalheim og Naerodalen.  
 7041 || » Naerodalen.  
 7042 = » »  
 7043 = » Stalheimskleven.  
 7060 = » »  
 7044 || » Stalheimsfos.  
 7045 || » Silvefos.  
 7046 = » Norsk Bondepige i Kariol.  
 7047 = » Vinje Hotel.  
 7048 = » Framnoes Hotel og Opheim Vand.  
 7081 = » Naerofjorden.  
 7091 || **Könefos.** Ringerike. Veien til Sundvolden.  
 7092 = » Ringerike. Usigten fra Krogkleven.  
 7093 = » » Hönefos.  
 7094 = » » Hofsfossen ved Hönefos.  
 7147 = » » Hönefos.  
 7117 = **Lofoten.** Svolvaer.  
 7118 = » Troldfjord Raftsund.  
 7119 = » Raftsund.  
 7120 = » » Digermulen.  
 7143 = » Svolvaer med Hotel Lofoten.  
 7144 = » Kabelvaag med Vaagekallen.  
 7152 = » Raftsund fra Tigermulen.  
 7071 = **Molde.** Molde fra Varden.

## Size II, Continued.

|        |                                                 |        |
|--------|-------------------------------------------------|--------|
| 7072 = | <b>Molde</b> mit Kirken.                        | 7018 = |
| 7073 = | » » Havnen.                                     | 7019 = |
| 7078 = | » Totalbillede.                                 | 7021 = |
| 7062 = | <b>Nordfjord.</b> Olden.                        | 7022 = |
| 7063 = | » Loën.                                         | 7023 = |
| 7064 = | » Kjendalskronebrae.                            | 7024 = |
| 7065 = | » »                                             | 7025 = |
| 7074 = | <b>Romsdalen.</b> Veblungsnoes og Romsdalshorn. | 7026 = |
| 7075 = | » » Romsdalshorn.                               | 7027 = |
| 7076 = | » Troldtinderne fra Hole.                       | 7028 = |
| 7077 = | » Horgheim og Troldtinderne.                    | 7029 = |
| 7080 = | » Veien fra Veblungsnaes Tit Romsdal.           | 7030 = |
| 7095 = | <b>Skien.</b>                                   | 7031 = |
| 7049 = | <b>Sognefjord.</b> Gudvangen.                   | 7032 = |
| 7061 = | » Gudvangen Kilfos.                             | 7033 = |
| 7050 = | » Naerofjorden fra Gudvangen.                   | 7034 = |
| 7081 = | » Naerofjord.                                   | 7035 = |
| 7051 = | » Balholm fra Fjorden.                          | 7036 = |
| 7052 = | » Essefjord ved Balholm.                        | 7037 = |
| 7053 = | » Mundal, Fjaerland.                            | 7038 = |
| 7054 = | » » »                                           | 7039 = |
| 7055 = | » Boiumsbrae.                                   | 7040 = |
| 7056 = | » Suplebrae.                                    | 7041 = |
| 7057 = | » Isrotte ved Suplebraeen.                      | 7042 = |
| 7066 = | <b>Stryn.</b> Opstrinsvand fra Hjelle.          | 7043 = |
| 7090 = | <b>Telenmarken.</b> Kongsberg.                  | 7044 = |
| 7096 = | » Panorama fra Bolkesjö.                        | 7045 = |
| 7097 = | » Tinnoset.                                     | 7046 = |
| 7098 = | » Rjukanfos.                                    | 7047 = |
| 7099 = | » Hitterdals Kirke.                             | 7048 = |
| 7100 = | » Tinnfossen.                                   | 7049 = |
| 7101 = | » Parti af Hitterdalsvand.                      | 7050 = |
| 7102 = | » Bandakvand fra Dalen.                         | 7051 = |
| 7103 = | » Löveid Sluser.                                | 7052 = |
| 7104 = | » Voangfos Sluser. Bandak Canal.                | 7053 = |
| 7105 = | » Dalen.                                        | 7054 = |
| 7106 = | » Hotel Dalen.                                  | 7055 = |
| 7148 = | » Fagerstrand.                                  | 7056 = |
| 7149 = | » Eidsfos Sluser.                               | 7057 = |
| 7150 = | » Bandaks Canal.                                | 7058 = |
| 7113 = | <b>Tromsø.</b> Nordland Torghatten.             | 7059 = |
| 7151 = | » Nordland Bodö.                                | 7060 = |
| 7114 = | » Syv Söstre.                                   | 7061 = |
| 7115 = | » Hestmandö.                                    | 7062 = |

## Size II, Continued.

- 7116 = **Tromso.** Svartisen.  
 7145 = « En Nordlandsbad.  
 7121 = » Tromso med Tromstind.  
 7122 = » Lap med Rensdyr.  
 7123 = » Lappefamilie.  
 7124 = » Parti fra Lyngenfjorden.  
 7125 = » Hammerfest fra Nord.  
 7126 = » Hammerfest Midnatsol fra Hammerfest.  
 7138 = » » fra St. Hans Haugen.  
 7127 = » Fluglehjerget paa Hjelmsö.  
 7128 = » Nordkap og Midnatsolen.  
 7132 = » » Udsigt mod Nord.  
 7130 = » Nordkaphorn og Midnatsolen.  
 7139 = » Hornviken. Opstigningen til Nordkap.  
 7140 = » Tuffjord. Halfangerstation.  
 7141 = » Lyngenfjord. Lyngseidet fra fjorden.  
 7142 = » Harstadhavn.  
 7146 = » Kjosen i Ulfsfjorden.  
 7107 = **Trondhjem.** Nor-Trondhjem.  
 7108 = » Domkirken.  
 7109 = » Indre.  
 7110 = » Ovre Lerfos.  
 7111 = » Nedre Lerfos.  
 7112 = » Fossestuen Hotel.

---

## PANORAMA.

Small Size.

4563 Trondhjem-Panorama,  $6\frac{3}{4}$  by  $17\frac{3}{4}$  inches.

# SWEDEN.

## Size II.

Unmounted  $6\frac{3}{8}$  by  $8\frac{3}{4}$  inches.

- 7129 = **Stockholm.** Skansen.  
 7131 = » Kungstädgården.  
 7133 = » Udsigt fra Mosebacke.  
 7134 = » Katarinahissen.  
 7135 = » Riddarholmen.  
 7136 = » Kungl. Slottet.  
 7137 = » Grand Hotel and National Museum.  
 7153 = » 1897 Ars-Utställning.



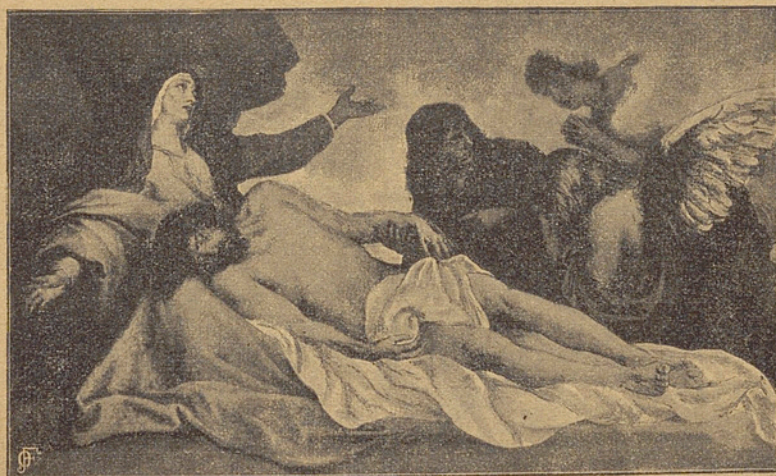
PANORAMA

Small Size

4568 Trendition-Panorama, 8 1/2 by 11 1/4 inches

## First part of the Collection of Oil Paintings.

|                                                           | Size                                                                  | Price per unmounted copy |
|-----------------------------------------------------------|-----------------------------------------------------------------------|--------------------------|
| The Burial of Christ by A. Ciseri ... ..                  | inch. 16 <sup>3</sup> / <sub>8</sub> by 8 <sup>3</sup> / <sub>4</sub> | 1/3                      |
| The Burial of Christ by A. Ciseri ... ..                  | " 16 <sup>1</sup> / <sub>2</sub> " 23 <sup>1</sup> / <sub>2</sub>     | 10/-                     |
| Mary's Ascension by Rubens ... ..                         | " 8 <sup>1</sup> / <sub>2</sub> " 10 <sup>1</sup> / <sub>2</sub>      | 2/-                      |
| The Holy Virgin taught by St. Anne by Rubens ... ..       | " 8 <sup>1</sup> / <sub>2</sub> " 10 <sup>1</sup> / <sub>2</sub>      | 2/-                      |
| The Holy Family by Rubens ... ..                          | " 8 <sup>1</sup> / <sub>2</sub> " 10 <sup>1</sup> / <sub>2</sub>      | 2/-                      |
| The taking down of Christ from the Cross by Rubens ... .. | " 8 <sup>1</sup> / <sub>2</sub> " 10 <sup>1</sup> / <sub>2</sub>      | 2/-                      |
| A game without profit by R. Ritz ... ..                   | " 13 " 17                                                             | 6/6                      |
| Happiness of a mother by C. Groby ... ..                  | " 12 <sup>3</sup> / <sub>4</sub> " 17 <sup>1</sup> / <sub>2</sub>     | 6/6                      |
| The Mourning of Christ by A. van Dyck                     | " 13 <sup>1</sup> / <sub>4</sub> " 22                                 | 8/-                      |
| Milksoup of Kappel a piece of Swiss history ... ..        | " 15 <sup>1</sup> / <sub>2</sub> " 22 <sup>1</sup> / <sub>4</sub>     | 8/-                      |
| The Holy supper by Leonardo da Vinci                      | " 14 <sup>3</sup> / <sub>4</sub> " 26 <sup>1</sup> / <sub>4</sub>     | 10/-                     |
| Extremum dedit suavium (The last Kiss)                    | " 16 <sup>3</sup> / <sub>4</sub> " 26 <sup>1</sup> / <sub>2</sub>     | £ 2                      |



The Mourning of Christ by A. van Dyck.

Indelible Mementos  
of journeys.

Drawing room  
decorations  
at moderate figures.

## INDEX.

General remarks on the 2<sup>nd</sup> page of the cover of catalogue

|                 | Sizes | I | II | III | IV | V | VI | Sundries |
|-----------------|-------|---|----|-----|----|---|----|----------|
| England ... ..  |       | 1 | 1  | 20  | —  | — | 20 | 21       |
| Ireland ... ..  |       | — | 21 | —   | —  | — | —  | —        |
| Scotland ... .. |       | — | 23 | —   | —  | — | 24 | 24       |
| Wales ... ..    |       | — | 24 | —   | —  | — | —  | —        |
| Denmark ... ..  |       | — | 28 | —   | —  | — | —  | —        |
| Holland ... ..  |       | — | 29 | —   | —  | — | —  | —        |
| Norway ... ..   |       | — | 32 | —   | —  | — | —  | 35       |
| Sweden ... ..   |       | — | 36 | —   | —  | — | —  | —        |

### *Some Press Opinions on Photochroms.*

*Singapore Free Press.*—"This method of reproduction shows the most effective results, combining as they do the accuracy of photography with the free scope of colour".

*Daily Chronicle.*—"They are superb."

*Morning Post.*—"Most successful pictures."

*Review of Reviews.*—"These pictures give one a more vivid and accurate impression of places and people than ordinary photographs can do."

*The Indian Daily News, Calcutta.*—"The art of colour photography appears to have been brought to the point of practical utility. There are coloured photographs of well-known Indian scenes, notably a large view of Dalhousie Square, Calcutta, which for beauty and fidelity of outline, and artistic colour finish will compare favourably with water Colour painting. The pictures are distinctly novel, and have been highly praised by the Home Press."

### The decoration of our Homes

will be made popular all over the world

by photochroms nicely framed.

Zurich, March 1898.

Photoglob Co.

Intuitive means  
for  
education in schools.

Enclosed: 1 price-list.

INDEX  
of sites for tourists  
and foreigners.